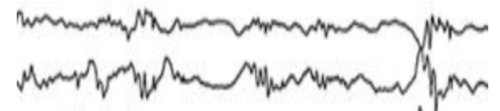
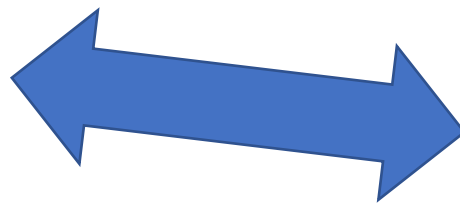
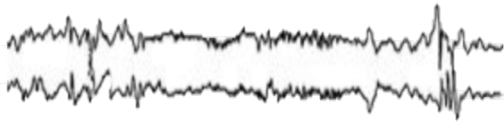


Northwestern | LEARN

Language, Education, and Reading Neuroscience Lab



Are children's and parents' brains "in synch" when they interact?

The LEARN Lab is studying children ages 1-5 with and without autism and their parent to understand how their brains function during communication.

What is involved?

- You will be asked to complete some developmental, social, and family questionnaires about yourself and your child.
- You and your child would come to Northwestern University in Evanston for two visits:
 - Child language assessment (~ 1.5 hours)
 - Parent-child EEG recording while playing and watching movies together (~ 1 hour).
- Visits can be scheduled on weekdays or weekends, at your convenience.



What is EEG?

EEG is a safe, child-friendly way of measuring the brain's activity. You wear a cap like the photos on the other side!

**To learn more
and see if you are eligible:**

Please email

LEARNlab@northwestern.edu

or call us at 847-868-2255.

We look forward to working with

you! Find us at @NULearnLab or

<http://learnlab.northwestern.edu>

What do we receive?

Families receive up to \$100 in gift cards for participating. (\$30 for language assessment, \$60 for EEG, and \$10 for completing questionnaires.)

We also provide free parking.